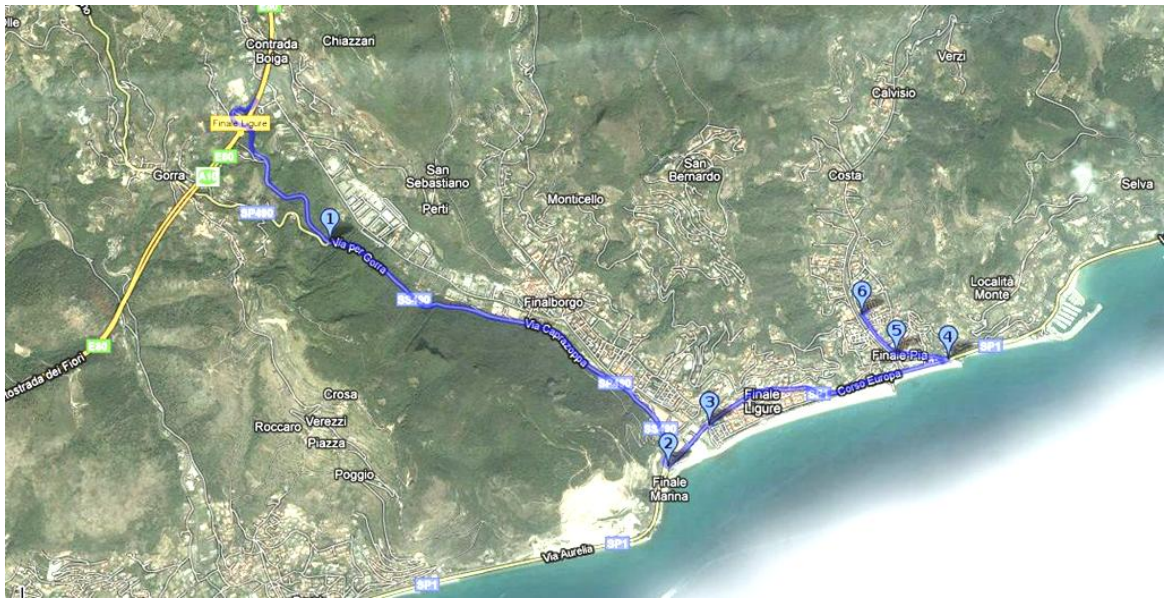
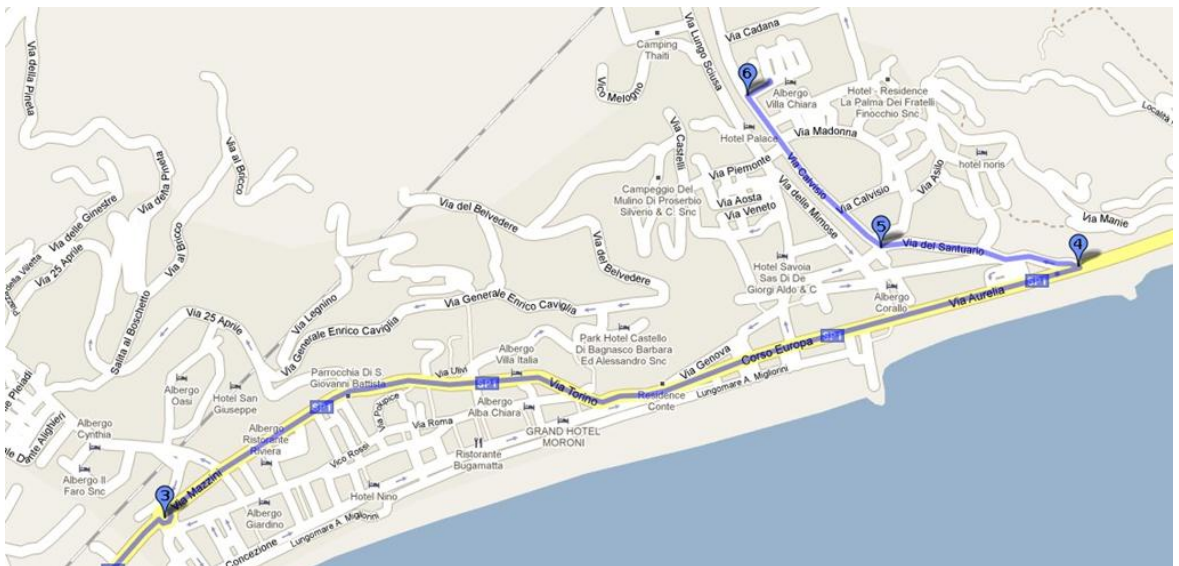


# How to reach Residence Glicini by car



Map of the complete path



Detail of the last part of the path

*Note: the path described here is the easiest, based on our experience, but it is not the only one, not even the shortest: if your GPS device gives different directions, feel free to follow them*



*Point 2 – Turn left into via Aurelia*

Arriving with the Highway A10 (Genova-Ventimiglia), take the exit of Finale Ligure. 800 meters after the toll, turn left downhill, towards Finale Ligure (**point 1**). Follow the road that goes towards the sea for 2.8 km, until you arrive at the seaside. Turn left into via Aurelia, direction “Finale Ligure” (**point 2**).



*Point 3 – Pass the roundabout*

Proceed for 400 meters, until the roundabout (Vittorio Veneto square; the railway station is on the left). Pass the roundabout and proceed on via Aurelia, leaving the gas pump on your right (**point 3**).



*Point 4 – Turn left before the tunnel*

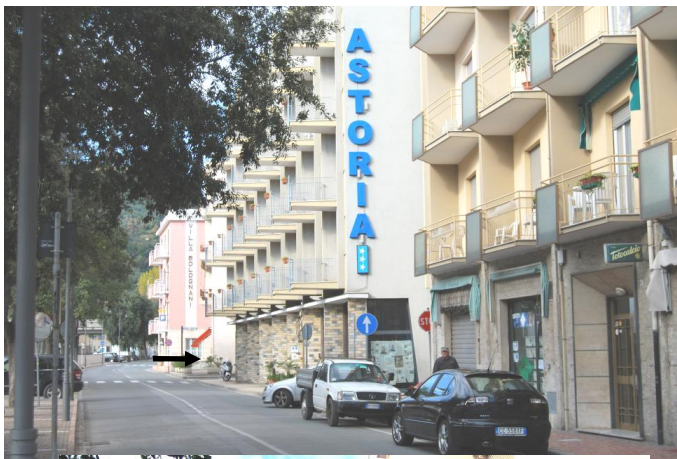
Road proceeds now slightly uphill, then slightly, until a traffic light, usually flashing yellow (from roundabout to traffic light: 1,1 km).

Pass the traffic light and drive along the seaside for another 500 meters until the end of Finale Ligure, where via Aurelia enters a tunnel. Don't enter the tunnel: turn left instead, following directions for “Calvisio” (**point 4**).



*Point 5 – Turn right into via Calvisio*

Go on for 300 meters until the Finalpia church (leave it on your right) and Sciusa torrent, that here is crossed by a stone bridge (one-way only, opposite direction). Here the road turns slightly on the right, running along the torrent (**point 5**).



Drive next to torrent Sciusa for 300 meters, until you find via Bolognani on your right (**point 6**).

Via Bolognani is just after Hotel Astoria, and just before hotel Villa Bolognani. Further reference points are the new metal bridge, that is just before hotel Astoria, and the railway bridge, that is after via Bolognani and that should not be reached.



*Point 6 – Turn right into via Bolognani*

After turning right into via Bolognani, the entrance to Residence Glicini is on the left, just after Villa Bolognani: you can park your car next to the entrance door, in the temporary parking area.